

MT - TAWS Manual

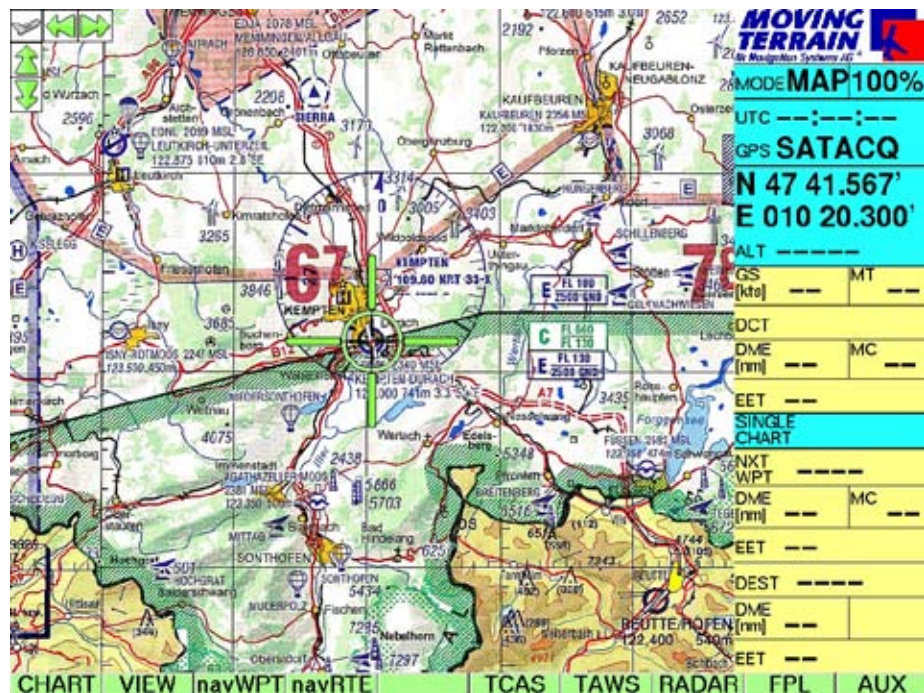
Contents

I. Showing the TAWS Layer	2
I.1. TAWS without GPS (Map-Mode)	3
I.1.1. MAP Mode: Display on the map	3
I.1.2. MFD Mode: Without map	4
II.2. TAWS in Flight Mode	6
II.2.1. MAP Mode: Display on the map	6
II.2.2. MFD Mode: Display without map	7
II. Hiding the TAWS Layer	8
III. Changing the colour indication.....	8

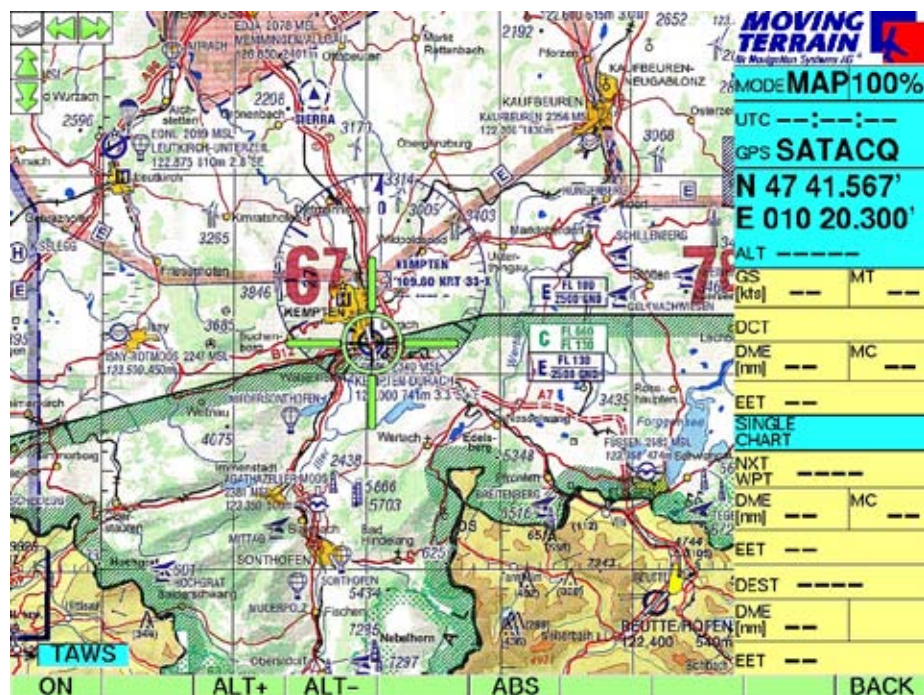
I. Showing the TAWS Layer

The TAWS module is activated by the following sequence of keys:

✓ **TAWS**



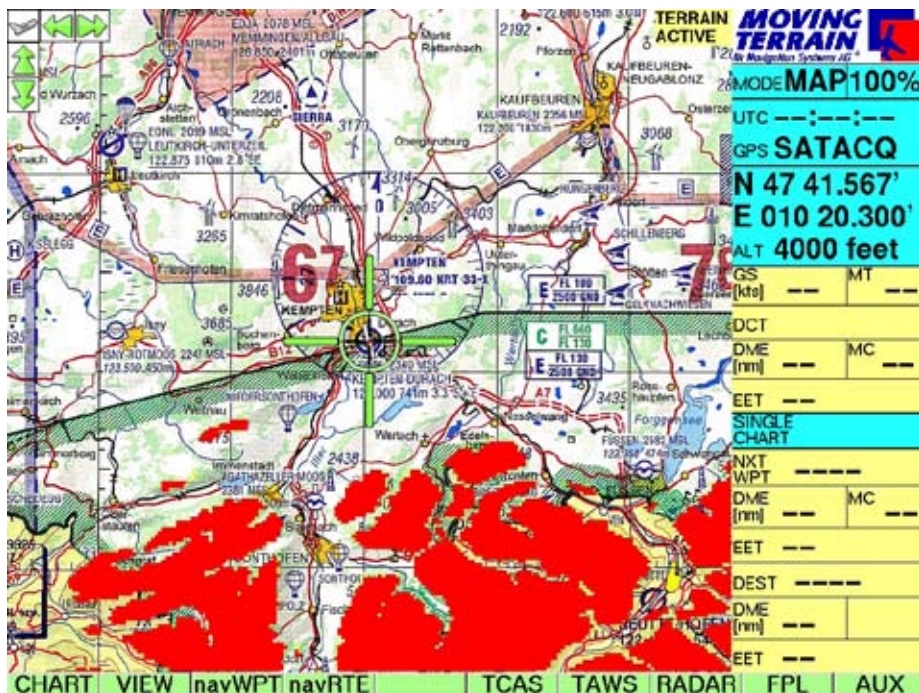
After the ✓ **ON** key is pressed, the TAWS module will be activated



I.1. TAWS without GPS (Map-Mode)

There are two different types of view modes in Map Mode:
MAP and MFD mode

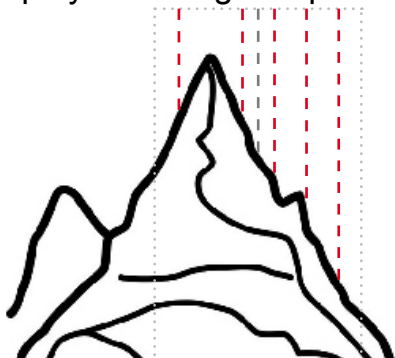
I.1.1. MAP Mode: Display on the map



The display consists of a layer on the map with reference to the current (simulated) altitude. Using the keys

✓ **ALT+ /** ✓ **ALT-**, one can select the altitude reference setting in increments of 500 feet (in Map Mode). Only the relative altitude is shown in MAP Mode.

The height on display is the highest point within the domain.



The colours are categorized in the following way:

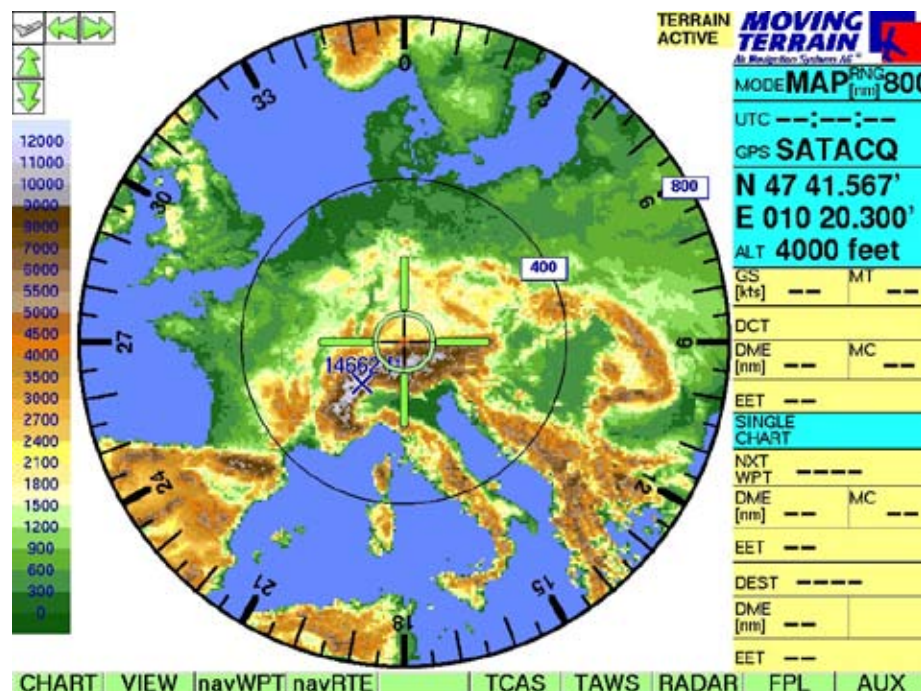
GREEN	within 600 feet below the current aircraft altitude
YELLOW	within 400 feet below the current aircraft altitude
RED	within 200 feet below the current aircraft altitude
BLUE	water: Altitude of a waterbody (ocean or lake)

These settings can also be changed as desired.

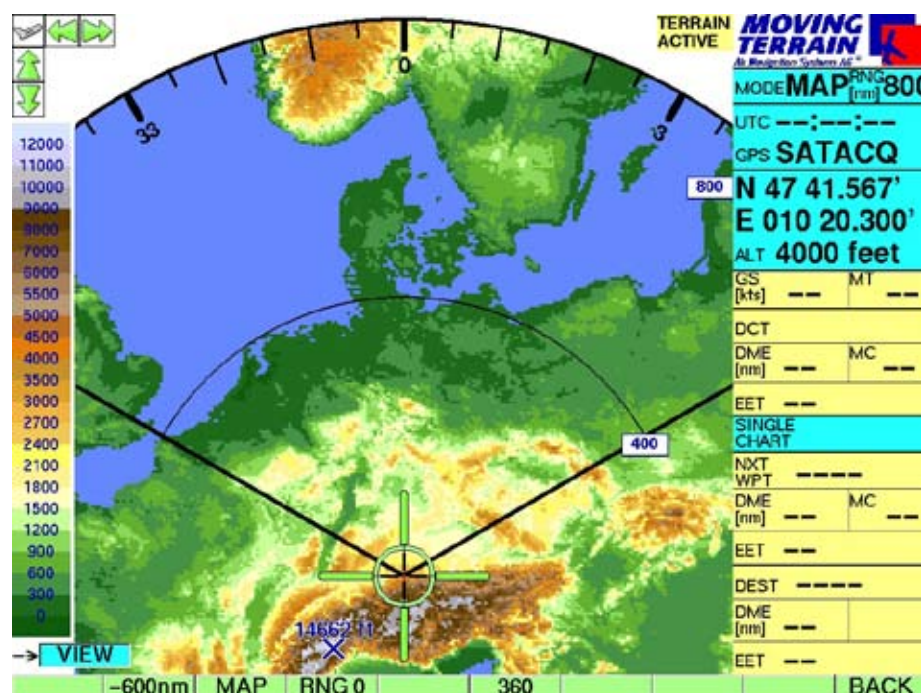
I.1.2. MFD Mode: Without map

MFD Mode can be activated via the ✓ **VIEW** and ✓ **MFD** keys. The display in MFD Mode is without a map. Two possibilities exist for displaying altitude data: absolute or relative.

The absolute altitude display is shown in the screenshot below. The legend on the left of the screen shows the colour coding of the absolute altitude display. The highest point in the visible display range is marked with an X with its corresponding altitude.



The ARC Mode is activated via the ✓ **ARC** key.



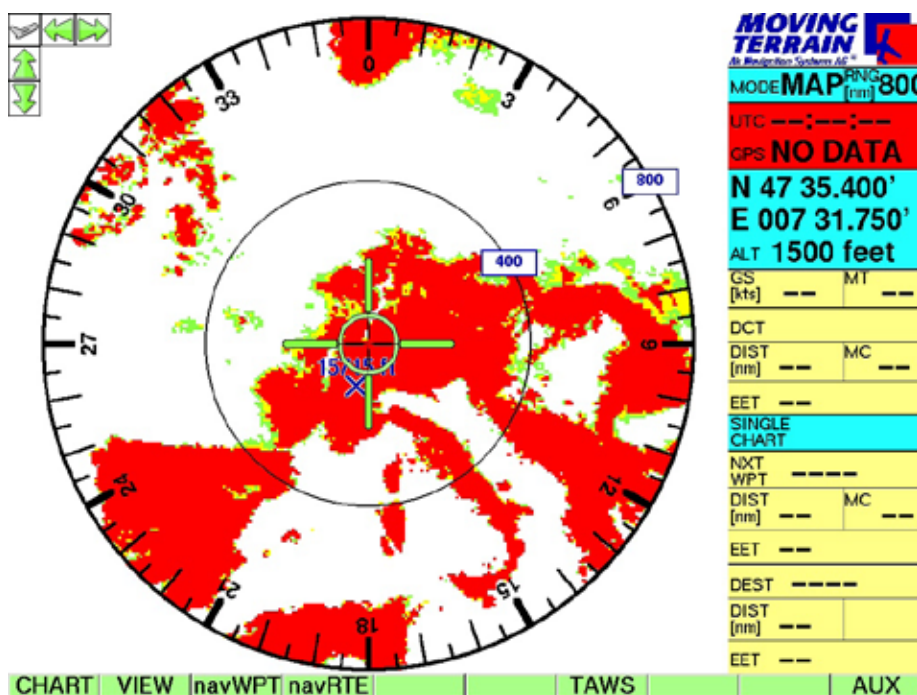
- ARC switching to ARC Mode
- + / - changes the Range between 10 nm and 800 nm
- 360 switching to 360 ° Mode
- RNG 0 100nm
- MAP back to Map Mode

Toggling between the relative and absolute display can be accomplished via the **✓ REL / ✓ ABS** key. The relative display with reference to a 1500 feet setting is shown in the screenshot below. This means the following:

GREEN heights between 900 feet and 1099 feet

YELLOW heights between 1100 feet and 1299 feet

RED heights greater than to 1300 feet



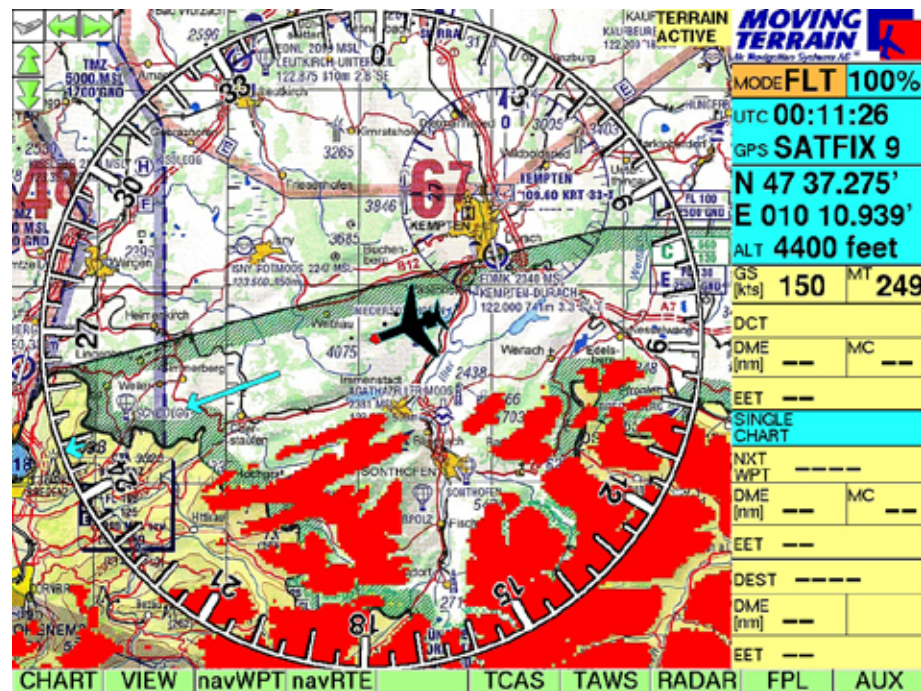
II.2. TAWS in Flight Mode

Only the relative height with reference to the aircraft's altitude is displayed in Flight Mode, regardless of the selection between the MAP or MFD Mode setting.

II.2.1. MAP Mode: Display on the map

The layer is displayed on the map with reference to the current GPS altitude.

- ✓ **VIEW**
- ✓ **MAP**



II.2.2. MFD Mode: Display without map

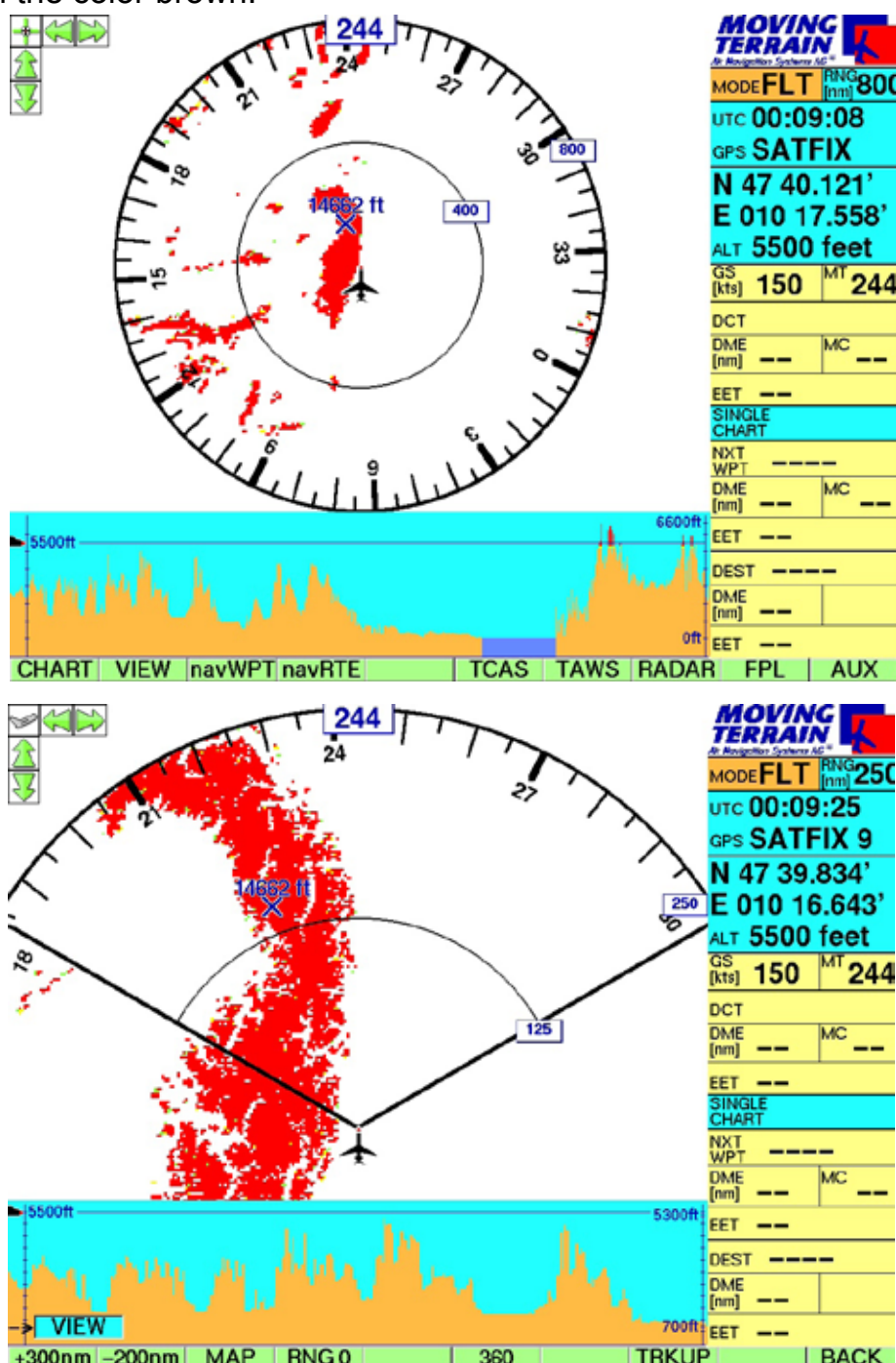
Only the display of the relative height is possible in MFD Mode. The vertical profile of the aircraft's current magnetic course heading is displayed underneath the compass map. Along the left edge of the screen one can find the red-nosed point on the aircraft, which depicts your current position. The color coding is identical to the previously described system:

GREEN between 1500 and 1000 feet below current aircraft altitude

YELLOW between 1000 and 200 feet below current aircraft altitude

RED within 200 feet below current aircraft altitude

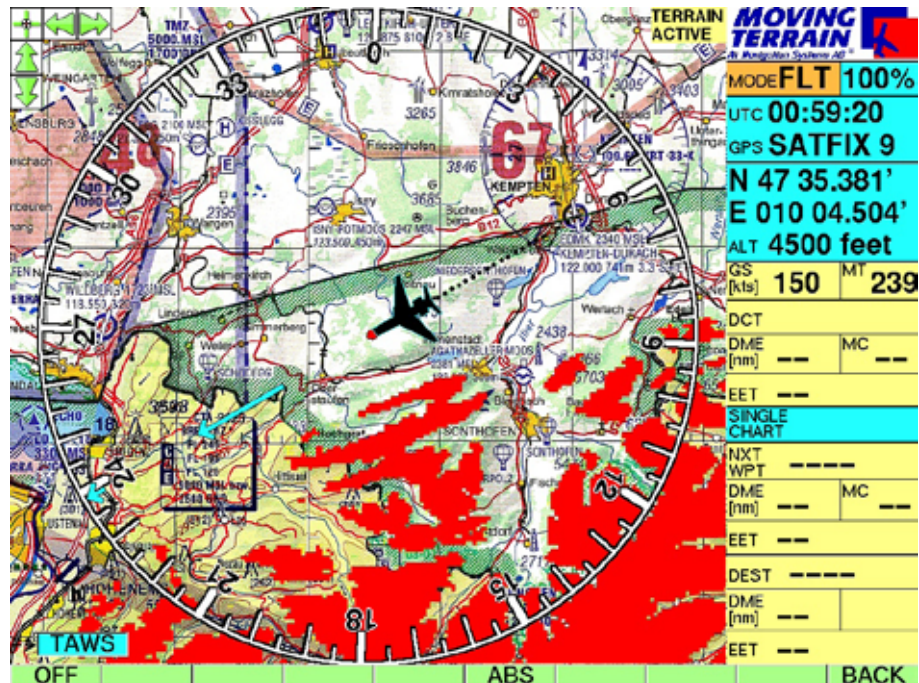
All heights greater the 1500 feet below the current aircraft altitude is colour coded with the color brown.



II. Hiding the TAWS Layer

Quitting the TAWS Mode can be accomplished via the keys:

- TAWS
- OFF



Important:

Simultaneous display of SAT RADAR data and height data is not possible with this system. When the radar module is activated, a confirmation of leaving the TAWS mode will be requested by the system.

III. Changing the colour indication

The setting made by Moving Terrain can be changed to customized values. A standard PS/2 keyboard is required to do the changes.

Change advice:

- 1) Connect the PS/2 keyboard with the MT-VisionAir(EP). The connector is located above the GPS connector.
- 2) Turn on the unit.
- 3) Press the EXIT button.

- 4) You are now in DOS mode (blinking cursor on black background)
- 5) Use connected keyboard to type in: **NC** and press ENTER button (**ENTER**).
- 6) A blue screen appears, which is divided in two parts.
- 7) Type in: **c: ENTER**
- 8) then: **cd\ ENTER**
- 9) and: **cd movter.pro ENTER**
- 10) after that look for a file called mtpro.ini using the **arrow** keys
- 11) Finding the file press **F4** (an editor opens)
- 12) Look for the following entry at the end of file:

```
[TAWS]
; *** define warning levels
; *** Heli = -200, -300, -400
; *** JET = -200, -1000, -1500
RED = -200
YELLOW = -400
GREEN = -600
```

NEVER change the ROOT entry without being advised by Moving Terrain staff.

The other entries may be changed. That means if RED is set to -200 everything that is higher than 200 m below the aircraft is drawn red on the map. To make the changes take effect, the semi-colons at the beginning of the lines have to be erased.

Important: If a line is modified, the others should be too.
RED has to be bigger than YELLOW, YELLOW bigger than GREEN.
If this rule is not considered, the default values (shown above) are used.