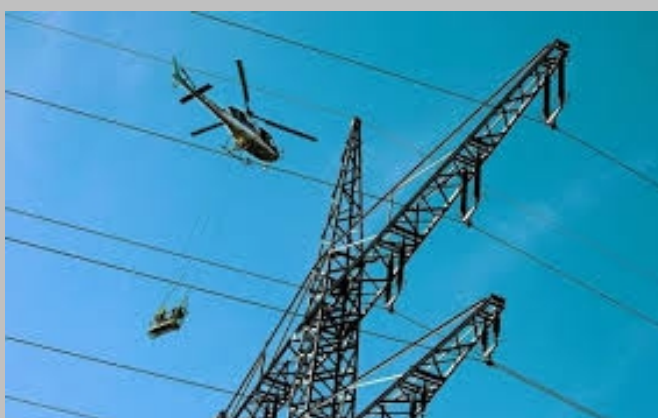


NEW: Only with MT: Obstacles for whole of Europe
Long time impossible - now reality!



NEW: Original illustration with Icons

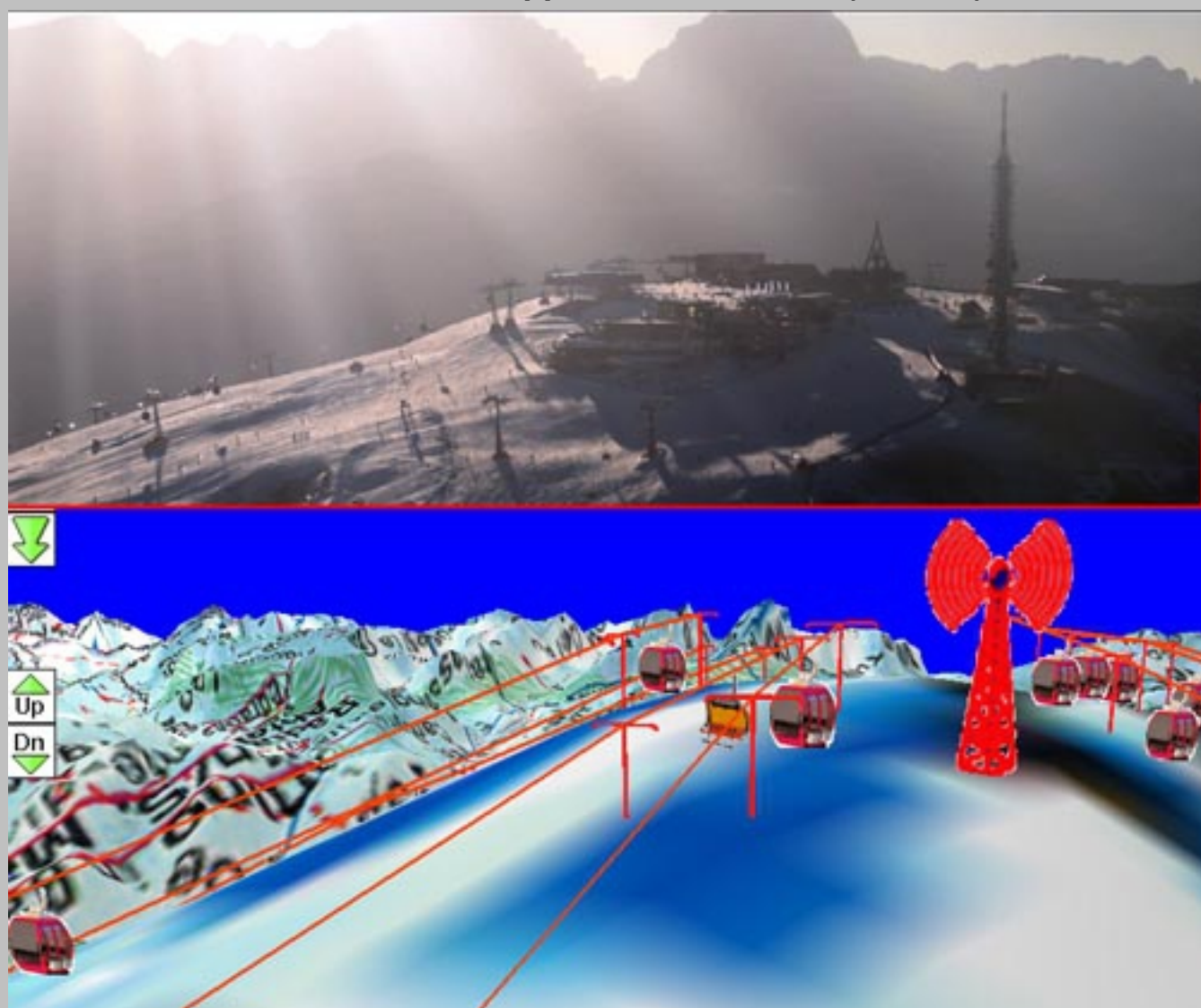


See inflight videos for 4 countries:

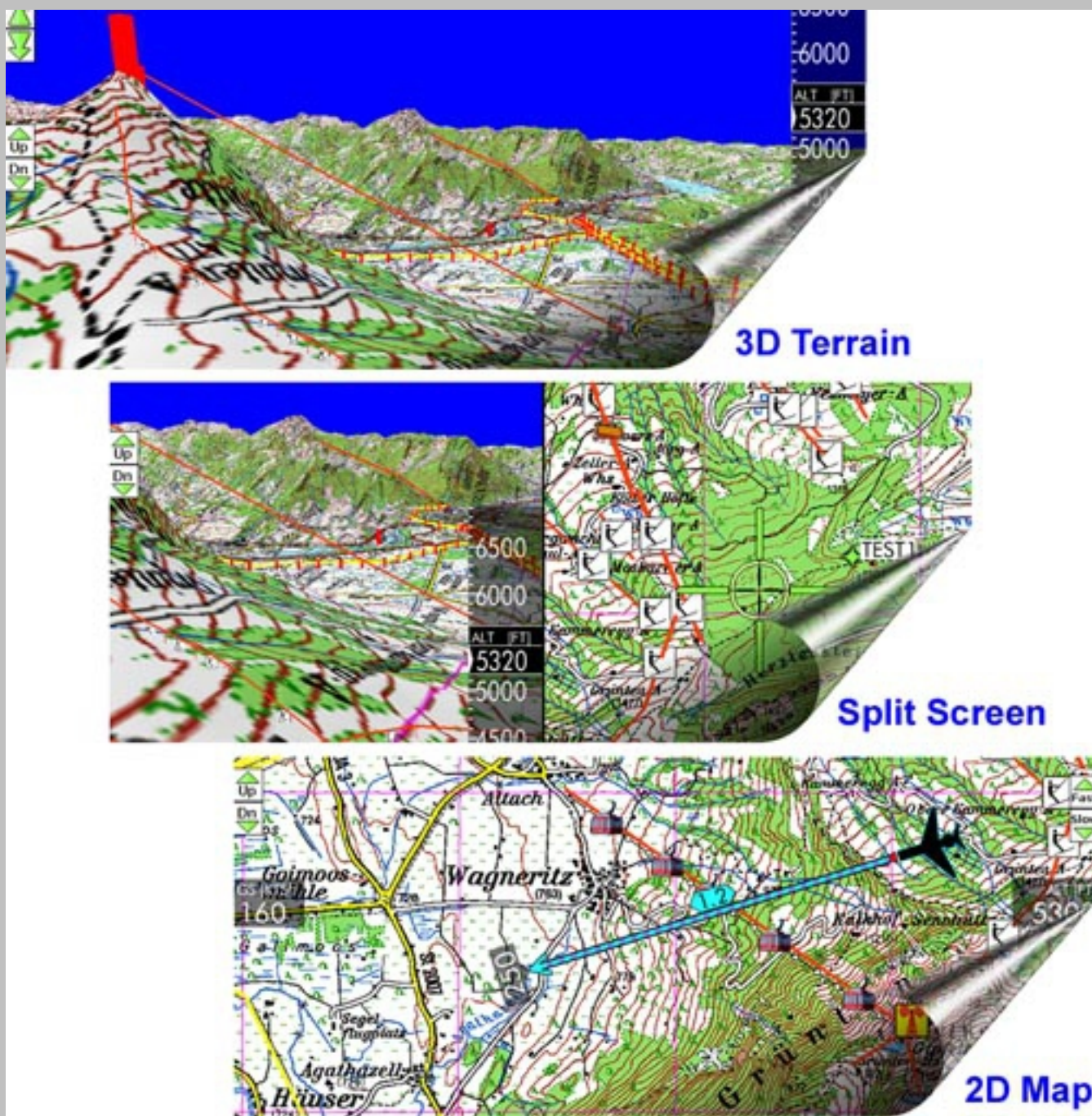
<http://www.moving-terrain.de/lang-en/produkte/software-module/mt-obstacle.html>

NEW: Precision: 25 m and higher over ground!

NEW: ca. 12 x more obstacles than Jeppesen based units (Garmin)



NEW: all obstacles synchronous in 2D and 3D



See inflight videos for 4 countries:

<http://www.moving-terrain.de/lang-en/produkte/software-module/mt-obstacle.html>

Moving Terrain AG - synonym for **creativity** and **innovation since 1993**

We are a German company producing and distributing **Multi Function Displays** for helicopters. In the alpine regions of Europe we are market leader in this field.

Please note: our **Multi Function Displays** are available certified referring to **ETSO C113F** as well as **DO 160** (environmental criteria).

For more information call us: +49 (0)8376-9214-11 or send us an e-mail: office@moving-terrain.de

With best regards
your MT-Team

Moving Terrain AG | Air Navigation Systems | Sparenberg 1 | 87477 Sulzberg | Germany
www.moving-terrain.de | www.blitzplan.de | Tel. +49 (0) 8376 - 9214 - 0 | Fax +49 (0) 8376 - 9214 - 14
If you do not want to receive our newsletter any longer, please send an email to: sales@moving-terrain.de